

Image Acquisition: OCT Angiography

Selecting and Customizing Scans



1 Select , **OCTA** and resolution (HR/HS).

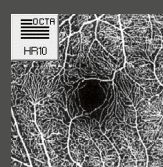
2 Select a preset scan pattern or **Follow-Up** to perform a follow-up examination.

3 If necessary, change scan parameters (scan width, height or density).

4 Adjust scan speed to 85 kHz if your patient's condition requires longer light exposure, e.g., in compromised ocular media, low grade cataract or vitritis.

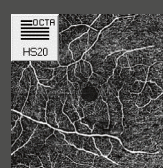
5 To save a customized pattern, click and hold the **Custom** button. Enter a scan pattern name and save the settings with **OK**.

PRESET SCAN PATTERNS



HIGH RESOLUTION (HR) 10° x 10°
Small capillaries, foveolar avascular zone

512 sections ART 5 frames
6 µm



HIGH SPEED (HS) 20° x 20°
Macular changes, larger vasculature

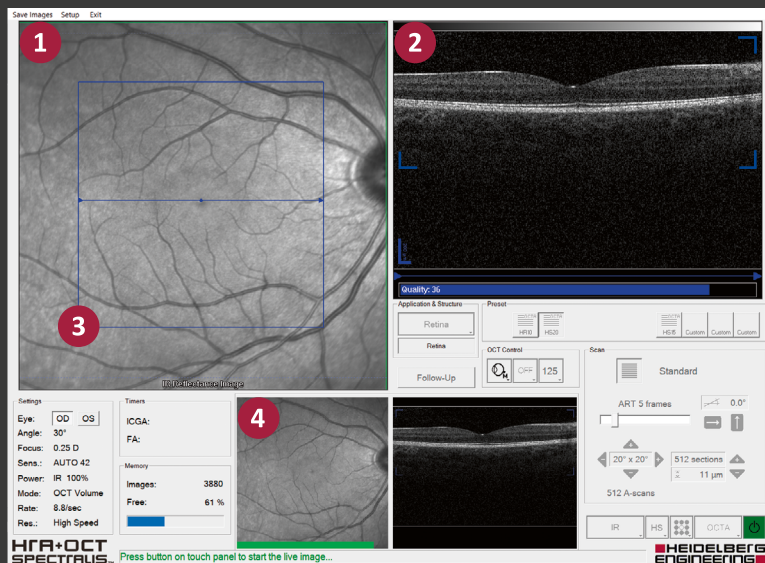
512 sections ART 5 frames
11 µm

i Density reduction of a volume scan lowers acquisition time but also image resolution and may impact the ability to visualize capillaries.

SHIFTING SCAN SPEEDS

With the OCTA default speed of 125 kHz, a faster image acquisition can be achieved without clinically relevant loss in OCTA image quality.

Acquiring OCTA Images



- 1 Align the IR image so that it is evenly illuminated and focus it so that the fine blood vessels around the fovea are sharp.
- 2 Align the OCT section image within the sweet spot (blue markers).
- 3 The acquisition is ready to be started when the scan pattern turns blue. Acquire the image with a short press of the joystick button or by pressing **Acquire** on the touch panel.

- 4 Watch the live image for an even illumination of the IR image and a proper orientation of the OCT section image, and try to ensure that the color-coded quality control bar stays green during the image acquisition. Keep your hands on the device and readjust the camera if needed until all images have been acquired.

MEMORY

If you have acquired multiple images and have not closed the acquisition window for an extended period, click **Save images** to free up memory and to prevent data loss in case of PC and/or hardware problems.

Checking OCTA Image Quality

- 1 After acquisition, the Quality Check Panel (QCP) opens automatically if enabled. Click **Keep** or **Delete** to keep or delete the image.

ADDITIONAL FOLLOW-UP

If the acquired scan is a follow-up image within a progression series, the **Additional Follow-up** button becomes active. Click it to reacquire the image.

- 2 The QCP closes automatically after keeping/deleting the latest image. Press **Esc** to exit the acquisition module.

