


Image Acquisition: BluePeak Autofluorescence

Acquiring a BluePeak Image

i Pupil dilation is recommended and will improve BluePeak autofluorescence (BAF) image quality notably. Be aware that after the injection of fluorescein dye, it is impossible to perform BAF imaging.

1 Start image acquisition by pressing .

2 Ensure the filter wheel on the camera head is in the "A" position and the infrared (IR) modality is selected.

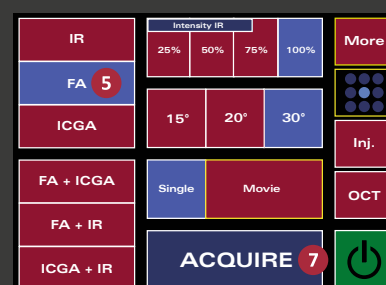



3 Move the camera head towards the patient's eye and position the clinically relevant area at the center of the image. Align the camera so that the IR image is evenly illuminated on all sides.


4 Focus the IR image so that the fine blood vessels are sharp, then adjust the focused image by -0.50/-1.00 diopter.

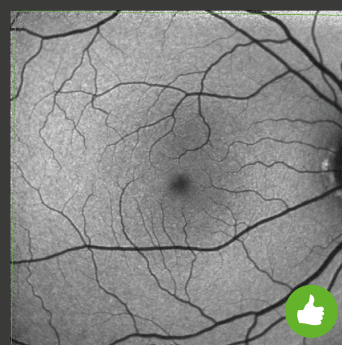


5 Select **BAF** from the software menu or via the touch panel (**FA/BAF**) and double-check the image is focused properly.



6 The image may initially be black. Engage the eye tracking with a long press of the joystick button or by pressing  on the touch panel.

i **Touch Panel Systems:** If automatic brightness control is not engaged, adjust the brightness by rotating the ART button  on the touch panel until the retinal vessels are visible.



7 As soon as the ART Mean has reached the required number of frames so that the image quality does not improve further, acquire the image with a short press of the joystick button or press **Acquire** on the touch panel.

8 Press **Esc** on the keyboard to exit.


Image Acquisition: BluePeak Autofluorescence

Acquiring a BluePeak & OCT Image

- 1 Align and focus the IR image as instructed in the previous page. Turn on the OCT.
- 2 Align the OCT section image so that it is correctly positioned in the **Sweet Spot** (blue markers).
- 3 Select **BAF** from the software menu or via the touch panel (**FA/BAF**) and double-check the image is focused properly.

i Touch Panel Systems: If automatic brightness control is not engaged, adjust the brightness by rotating the ART button on the touch panel until the retinal vessels are visible.

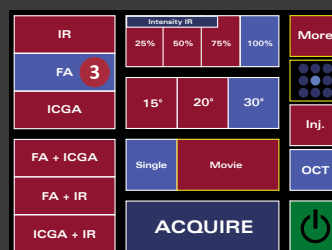
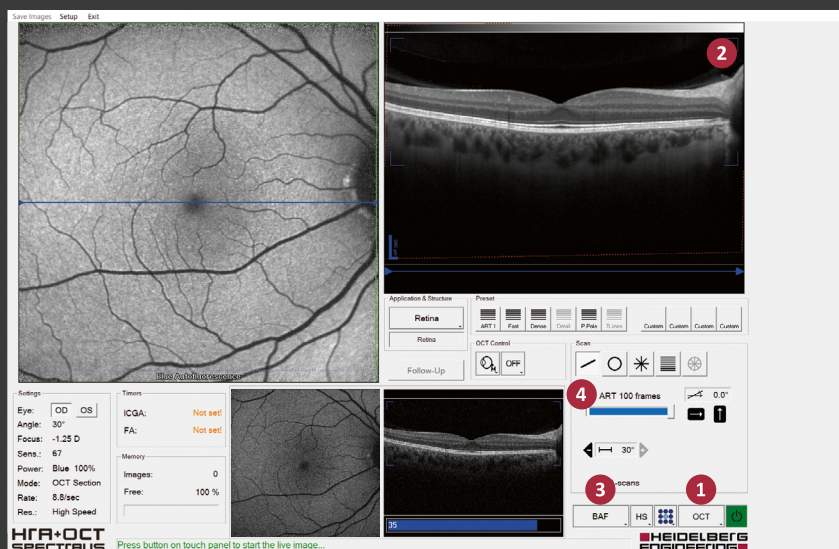


- 4** Engage the eye tracking with a long press of the joystick button or by pressing  on the touch panel. When the ART Mean has reached the required number of 100 frames in the OCT section image, acquire the image with a short press of the joystick button or press **Acquire** on the touch panel.



- 5** Start volume or radial scan with a short press of the joystick button or press **Acquire** on the touch panel. The image acquisition stops automatically when all OCT section images have been acquired.

i During acquisition, watch the lower small live image for an even illumination of the fundus image and proper orientation of the OCT section image. Keep your hands on the device and readjust the camera if needed until the ART Mean has reached the required number of frames in the line scan or all images in the volume/radial scan have been acquired.



- 6 Press **Esc** on the keyboard to exit.